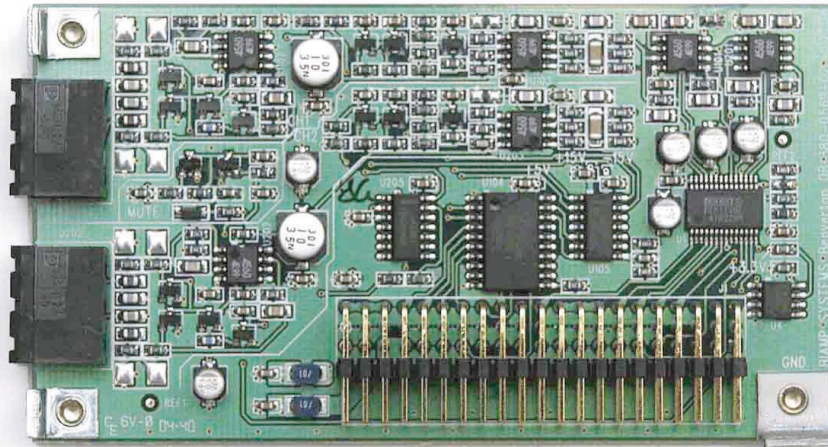


Audia® OP2e Output Cards Dual-Channel Mic/Line Outputs



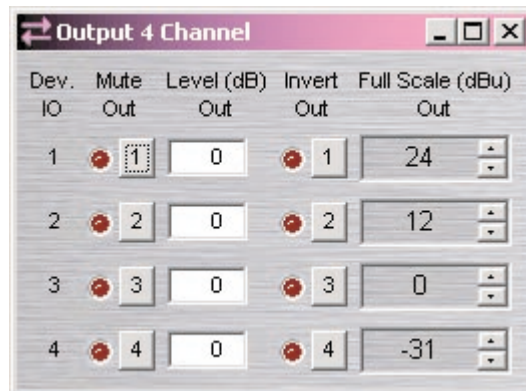
OP2e output cards allow each AudiaFLEX installation to have the quantity and type of outputs required. Each OP2e Card provides two channels of mic/line output, as part of AudiaFLEX hardware. Outputs are balanced, and are provided on plug-in barrier strip connectors. Software control of individual outputs includes: mute; level; signal invert; and full-scale output reference.

FEATURES

- Each card provides two mic/line output channels
- Integrates seamlessly into AudiaFLEX systems
- balanced outs on plug-in barrier strip connectors
- -100~+12dB level fader range for volume control
- invert function allows 180° signal polarity reversal
- selectable ref level for best interface/performance

Audia® OP2e Output Card SPECIFICATIONS

Frequency Response (20Hz~20kHz @ +4dBu):	+0/-0.25dB	Crosstalk (channel-to-channel @ 1kHz):	< -95dB
THD +N (20Hz~20kHz @ +4dBu):	< 0.0035%	Sampling Rate:	48kHz
Dynamic Range (20Hz~20kHz, 0dB):	> 110dB	D/A Converters:	24-bit
Output Impedance (balanced):	200 ohms	Selectable Full Scale Output Levels:	+24dBu, +18dBu, +12dBu, +6dBu, 0dBu, or -31dBu
Maximum Output (balanced):	+24dBu		



ARCHITECTS & ENGINEERS SPECIFICATION

The mic/line outputs shall be a two-channel output card for AudiaFLEX hardware. Each output channel shall provide two balanced analog mic/line outputs on plug-in barrier strip connectors. Software adjustment of individual outputs shall include: mute; level; signal invert; and selectable output reference level. Digital-to-Analog conversion shall be 24-bit, with a sampling rate of 48kHz. Performance specifications (20Hz~20kHz) shall be: Frequency Response +0/-0.25dB; THD+N < 0.0035%; and Dynamic Range > 110dB.

The mic/line outputs shall be an OP2e Output Card for AudiaFLEX.